



Mobile Flow Tester VMF®-mini

EPE-147307

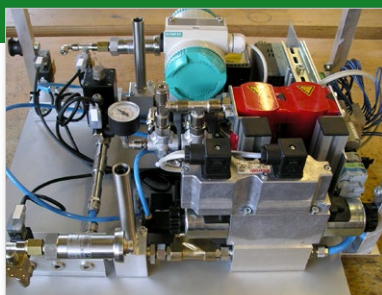
EP
ep-e.com

Made in
GERMANY



Determination of non-measurable geometric cross-sectional areas and diameters using flow measurement

Portable measuring apparatus with simple operation;
Measured with venturi nozzles and minimal measurement uncertainty



Similar to Figure

Technical data

Absolute pressure before nozzle [bar] 0..8

Measurement uncertainty $\pm 0.1\%$ FS

Temperature before nozzle [°C] 0..50

Measurement uncertainty 1/3 class B

Absolute pressure after nozzle [bar] 0..2.5

Measurement uncertainty $\pm 0.1\%$ FS

Temperature before test item [°C] 0..50

Measurement uncertainty 1/3 class B

Absolute pressure environment [mbar] 800..1200

Measurement uncertainty $\pm 0.1\%$ FS

Be entered sizes

Pressure ratio across test item 1.05..1.5

Deviation NaN

Dimensions

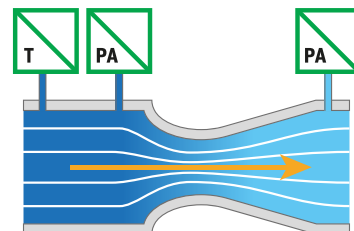
Testing system (L x W x H) [mm] 560 x 435
x 315

Description

The system is used for the determination of free cross-sectional areas or diameter of drillings that are difficult to access and which can not be determined with geometric measurement methods. The measurement uncertainty of the system lies in the small μm range. Integrated within the system is a highly accurate pressure control for adjusting a pressure ratio across the test item. The calculation and analysis takes place via a developed software in LabVIEW.

Advantages

- ✓ Compact, mobile construction
- ✓ Fast changeover by quick couplings
- ✓ Custom design of operating pressure and flow
- ✓ Simple operation through intuitive software



Special Solutions Application examples:



Automotive:

Cross-section determination of injector nozzles of engines



Power plant technology:

Cross-section determination of burner components



Aviation:

Cross-sectional determination on turbine blades and nozzles of turbines



This is only an **example** interpretation and is of course individually adaptable to your needs.



Top-Innovator
2016

For special requirements we are happy to advise you. Subject to change. / EPE-147307 / Last update: 09/2016 / V01
© EP Ehrler Prüftechnik Engineering GmbH, Wilhelm-Hachtel-Str. 8, D-97996 Niederstetten

TOP-INNOVATOR 2016: EP Ehrler Prüftechnik is one of the most innovative companies in the German SME segment.

+49 (0) 79 32 . 6 06 66 - 0 / +49 (0) 79 32 . 6 06 66 - 11 / info@ep-e.com / www.ep-e.com